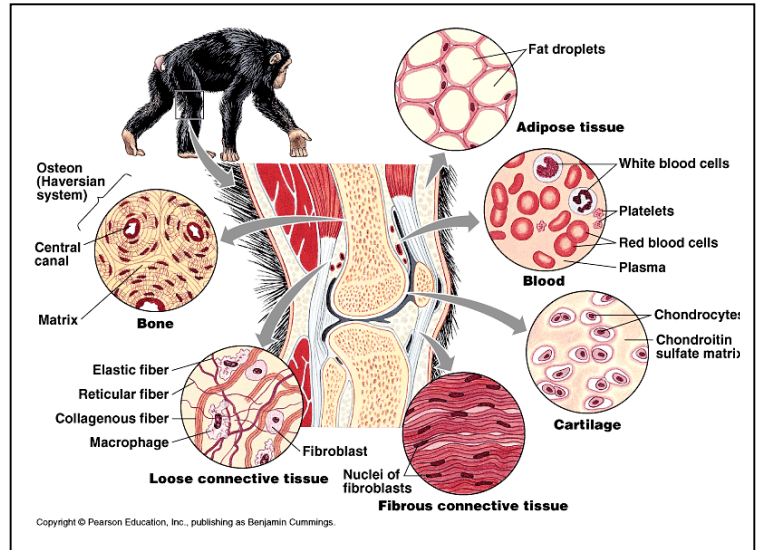


Connective Tissues

Connective Tissue

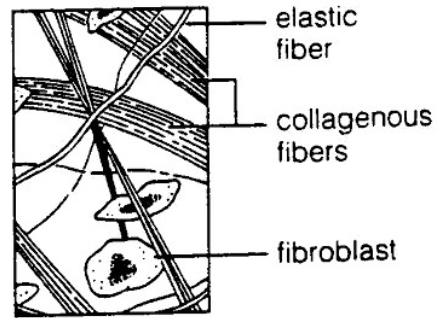
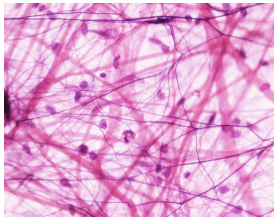
- ❖ Function:
 - _____ structures together
 - Provides support & protection
 - Fills spaces
 - Produces _____
 - _____
 - For energy, insulation, organ protection
- ❖ Structure:
 - Tissue cells are _____
 - _____ by extracellular matrix
 - Can be solid, semisolid, or liquid



- ❖ _____ of connective tissue determine its properties
- ❖ Fibers of the Matrix
 - _____ fibers - contain _____ which gives the fibers _____
 - _____ fibers - contain _____ more _____ than collagen but not as strong
 - _____ fibers - thin, highly branched _____ fibers that _____

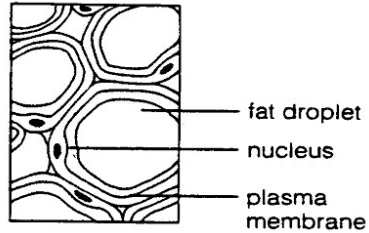
1. FIBROUS CONNECTIVE TISSUE

- ❖ _____ (areolar) connective tissue
 - adipose
- ❖ _____ connective tissue
 - Regular
 - irregular
- ❖ _____ connective tissue



A. Loose (Areolar) Connective Tissue

- ❖ Lies between other tissues or _____ binding them
- ❖ Cells made of _____ - large, star-shaped cells
- ❖ Contains many _____ fibers (_____) and _____ fibers (_____) _____
- ❖ _____ is a type of loose connective tissue
 - _____
 - found beneath skin, around kidney & heart, breast



B. Dense Connective Tissue

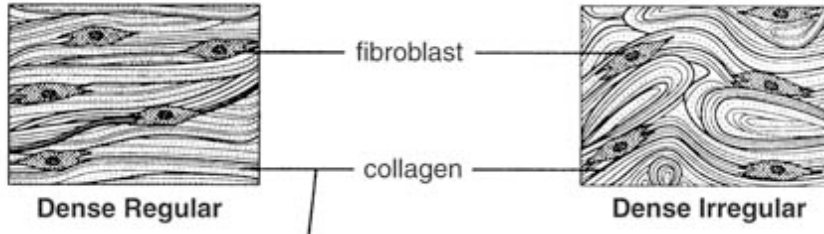
Regular

- ❖ Consists of _____

- ❖ Found in _____ & _____
- ❖ Binds organs together

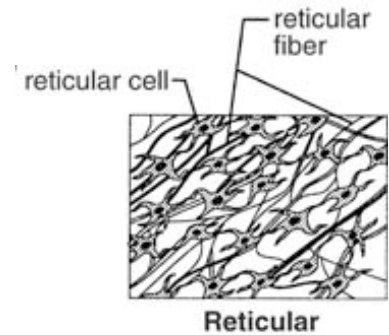
Irregular

- ❖ Bundles run in _____
- ❖ Found in inner portion of _____



C. Reticular Connective

- ❖ Has reticular cells and reticular fibers
- ❖ Also called _____
- ❖ Found in lymph nodes, spleen, thymus, and red bone marrow
- ❖ _____
- ❖ Part of _____

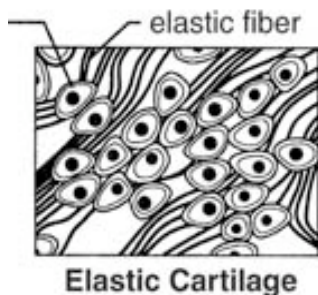
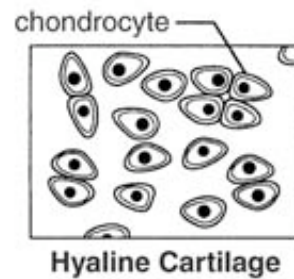


2. CARTILAGE

- ❖ The _____ (_____) lies in small chambers called _____
- ❖ Matrix is solid yet flexible
- ❖ _____, as a result, it heals slowly
- ❖ 3 types
 - _____ cartilage
 - _____ cartilage
 - Fibrocartilage

A. Hyaline Cartilage

- ❖ _____
- ❖ Matrix contains fine _____
 - Glassy, white, opaque appearance
- ❖ Found in the nose, ends of the long bones and ribs, rings in the trachea

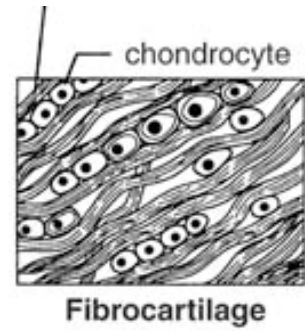


B. Elastic Cartilage

- ❖ Contains _____ and _____ fibers
- ❖ Found in the outer ear

C. Fibrocartilage

- ❖ Matrix contains strong _____ fibers
- ❖ Function: _____
_____ between joints
- ❖ Found in the pads between the vertebrae and knee joints



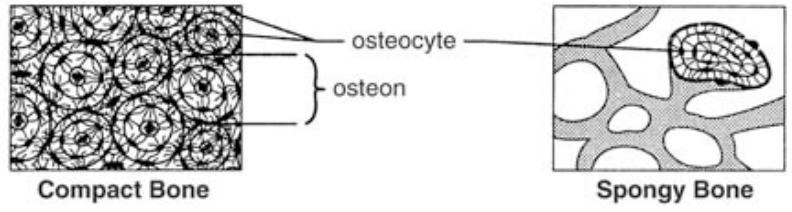
3. BONES

- ❖ _____ of the connective tissues
 - ❖ Minerals and protein fibers gives bone
-
- ❖ Two types:
 - Compact bone
 - Spongy bone

A. Compact Bone

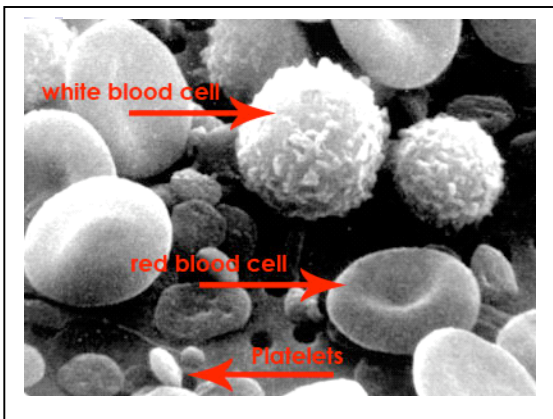
- ❖ Found in the _____

- ❖ Consists of many _____ called _____



B. Spongy Bone

- ❖ Found on ends of long bone
- ❖ Contains _____ called _____ separated by irregular spaces
- ❖ _____ found in the spongy bone



4. BLOOD

- ❖ Connective tissue

- ❖ Red blood cells (_____) - _____
- ❖ White blood cells (_____) - _____
- ❖ _____ - fragment of giant cells found in bone marrow